



CLEAN WATER HEALTHY FISH THRIVING COMMUNITIES

At Trout Unlimited, “infrastructure” means fixing rivers.

Thanks to more than \$230 million in federal investments, we are scaling up our efforts to restore rivers and streams, recover fisheries, and make communities healthier and economically stronger.

We are restoring and reconnecting rivers on national forests, Bureau of Land Management holdings and other key landscapes alongside the Forest Service, U.S. Fish and Wildlife Service, the Office of Surface Mining Reclamation and Enforcement, and our partners – from farmers and landowners to local communities, state and local governments, and conservation allies.

Our approach translates into cleaner water, healthier fisheries, and thriving local economies. We help towns recover from wildfires and floods. We help farmers improve operations and look after rivers running across their land. This work creates family-wage jobs for our restoration crews and the local contractors who work with us, many of them in rural communities.

With these historic investments in conservation, we are working at a scale that matches the challenges America’s rivers, fisheries and communities face.

TROUT UNLIMITED PROJECT HIGHLIGHTS: PENNSYLVANIA

BABB CREEK:

Babb Creek was once so polluted from abandoned mine drainage (AMD) that it was rendered essentially lifeless. The stream was so degraded that it was creating a dead zone of aquatic life in the famous Pennsylvania trout water Pine Creek for several miles below where Babb Creek entered. Construction of systems to address AMD in the watershed brought Babb Creek back to life, to the point where the stream has been formally designated a high-quality wild trout water. Pennsylvania will receive \$245 million to address AMD and, as a partner in that effort, Trout Unlimited will work with local contractors to invest \$2.2 million to complete much-needed maintenance on the Bear Run and Hunters Drift passive treatment systems to ensure Babb Creek and Pine Creek will remain healthy for future generations.

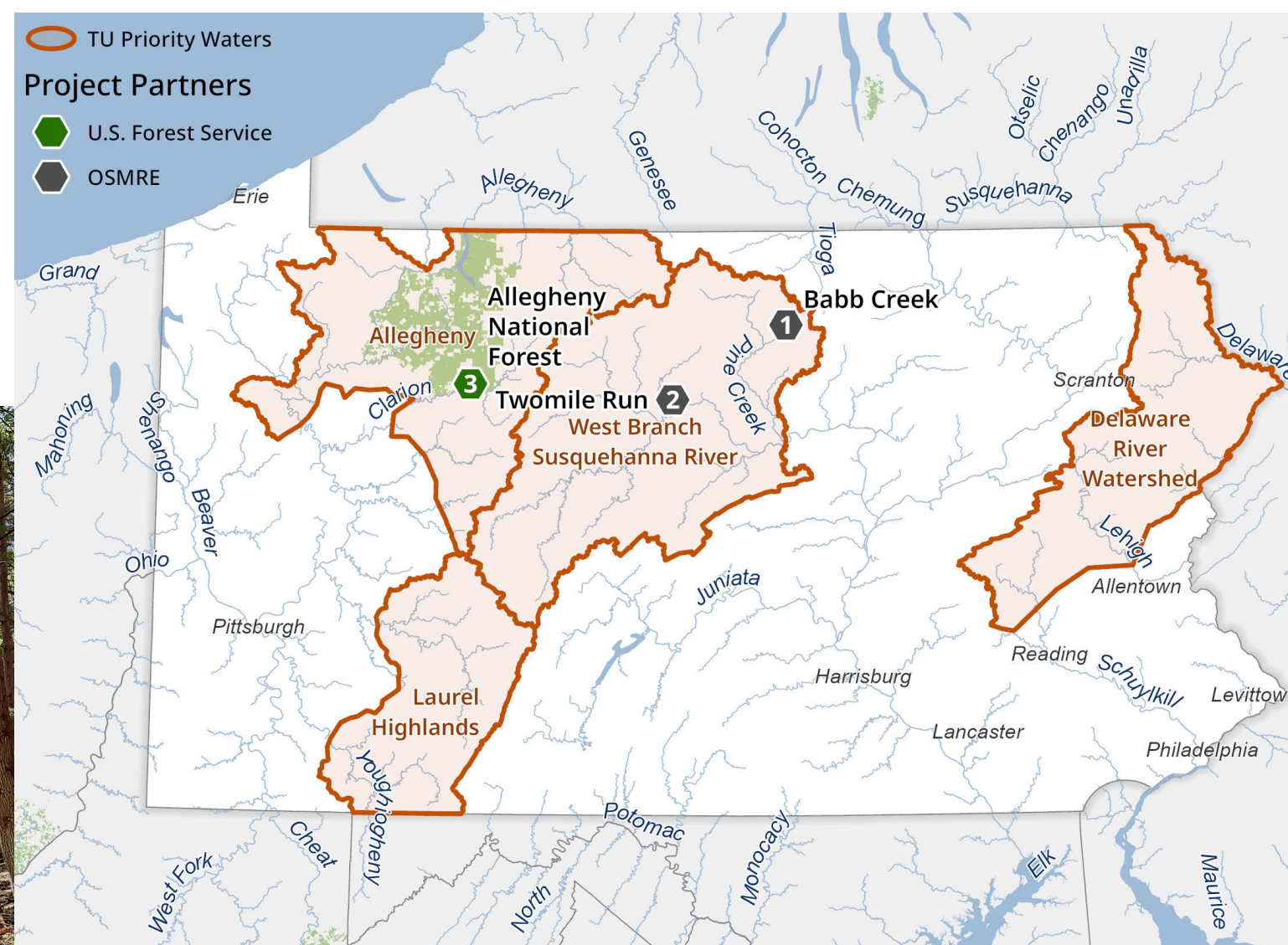


TWOMILE RUN:

The Swamp and Robbins Hollow passive AMD treatment systems on Twomile Run in the West Branch Susquehanna River watershed have been critical to restoring life to the small stream, a tributary to Pennsylvania's famous Kettle Creek. As a result, the restored section of Twomile Run was formally designated a Class A native brook trout stream after its resurrection. To maintain their effectiveness, the systems require periodic maintenance, such as cleaning limestone and replacing organic compost material in settling ponds every 10 years. This \$1.4 million project will create local jobs while sustaining the recovery of brook trout and other aquatic species in Twomile Run.

ALLEGHENY NATIONAL FOREST:

Trout Unlimited has partnered with the Forest Service to reconnect and improve habitat in native brook trout streams in the Allegheny National Forest. Removing barriers to fish passage such as perched culverts, as was done on Irwin Run, a tributary to the Clarion River, has reconnected over 5 miles of streams so trout and other aquatic species can access additional habitat for spawning, feeding, and thermal refuge during the heat of summer. Additionally, restoration crews are strategically adding wood to streams to enhance in-stream habitat and to make the streams function better during high flow events.



Trout Unlimited's Priority Waters are the 200+ rivers, streams, lakes, and ponds where we are directing our energies to care for and recover wild and native trout and salmon watersheds. Rooted in science and developed in collaboration with our supporters and trusted partners, these shared Priority Waters are the foundation of an ambitious strategic roadmap.



PARTNERSHIPS THAT WORK

Forest Service:

We are working on a \$40 million, five-year initiative that is increasing the pace and scale of watershed restoration on national forests, including the Allegheny National Forest in Pennsylvania. These forests are home to many of America’s most important trout and salmon species, including Pennsylvania’s state fish, the brook trout.

Office of Surface Mining Reclamation and Enforcement:

OSMRE’s Abandoned Mine Land (AML) Reclamation Program addresses the hazards and environmental degradation posed by legacy coal mines. Trout Unlimited works with the Pennsylvania Department of Environment, which administers OSMRE funding, to identify and address priority AML projects throughout the Keystone State.

“Our partnership is not just about cleaning a stream or increasing fish populations. It’s life-sustaining work that is as vital to aquatic species as it is to people and communities. When our natural resources are healthy, we are healthy as a nation and as individuals.”

*– Randy Moore, chief of the U.S. Forest Service,
on its TU partnership*